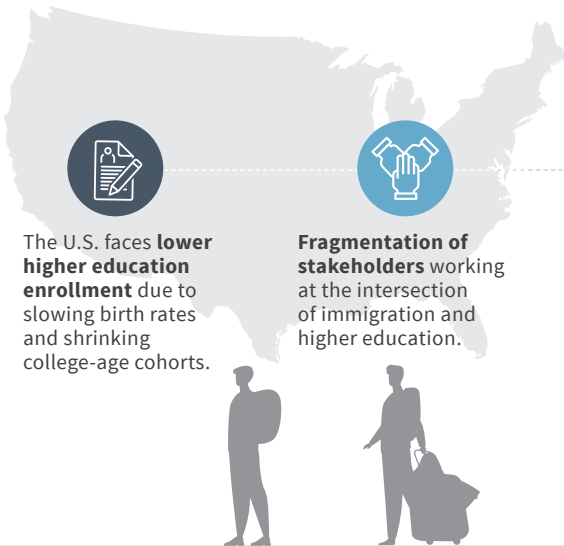


THEORY OF CHANGE

THE CHALLENGE



The U.S. faces **lower higher education enrollment** due to slowing birth rates and shrinking college-age cohorts.



Fragmentation of stakeholders working at the intersection of immigration and higher education.



Decline in the global appeal of the U.S. as a destination for educational and professional advancement.



An outdated immigration system presents barriers for immigrants and needs to be updated.



Immigration laws present barriers for immigrants. **Our immigration system needs to be updated.**



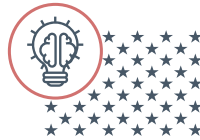
THE SOLUTION

The **HIGHER ED IMMIGRATION PORTAL** is addressing gaps in awareness and building coalitions with relevant stakeholders to advance policy reform according to the following **THEORY OF CHANGE**:

GUIDING PRINCIPLES

WE BELIEVE:

1 HIGHER EDUCATION IS A CRITICAL PATHWAY TO BUILDING THE AMERICAN TALENT POOL.



2 IMMIGRATION IS INTERSECTIONAL.



3 NATIONAL, STATE, AND LOCAL POLICY ENVIRONMENTS ARE BEST WHEN INCLUSIVE.



Collaborative state, local, and campus policies.



Relentless work of students and other advocates.



THE PORTAL

COALITION BUILDING



Convenes partners and contributors that produce relevant resources, showcases their work, and sustains this network.

CASE MAKING THROUGH EVIDENCE



Centralizes data, research, and storytelling on undocumented, international, refugee, and other immigrant students in one location.

COMMUNICATIONS & OUTREACH



Advances communication and engagement strategies to establish the Portal as a trusted source of information.

POLICY CHANGE

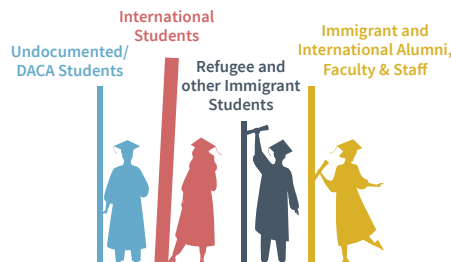


Becomes one of the main policy intervention tools to advance immigration and higher ed reform.

OUTCOMES

1 STATES AND CAMPUSES EXPAND ACCESS TO HIGHER EDUCATION REGARDLESS OF A STUDENT'S IMMIGRATION STATUS.

2 U.S. WELCOMES AND RETAINS INTERNATIONAL STUDENTS.



3 HIGHER EDUCATION IS A RESETTLEMENT PATHWAY FOR REFUGEE STUDENTS.

4 AWARENESS OF THE POSITIVE IMPACT OF IMMIGRANT AND INTERNATIONAL STUDENTS ON THE ECONOMY AND SOCIETY.

KEY STAKEHOLDERS



Students | Colleges & Universities | Higher Ed Associations | Advocates | Multilateral Organizations
 U.S. Congress | Governor Offices | State Legislatures | Government Agencies | Public/Media | Philanthropy
 More than 16 National and State-level Portal Partners and Contributors